



Number 85

www.canalwatch.org

December 2022

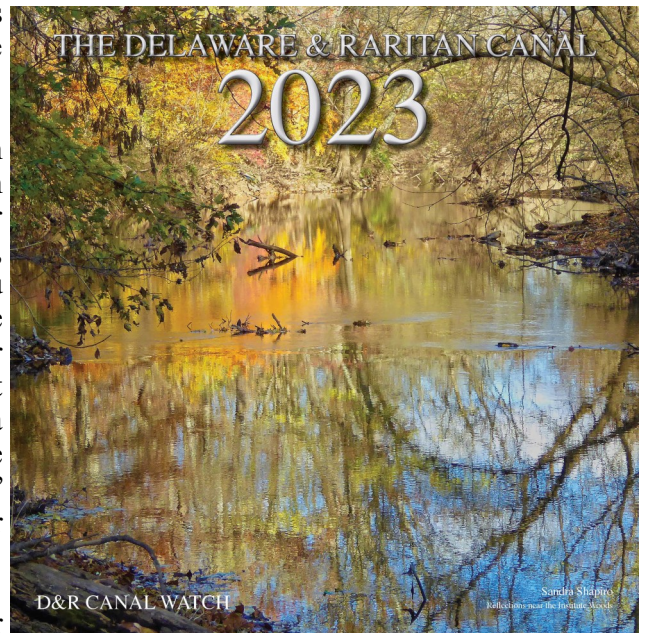
Canal Photography for Annual Calendar Please note these suggestions from our judges

Interest in taking photographs that can be submitted for inclusion in the annual D&R Canal Watch calendar has been very encouraging. The judges who view the submitted photographs and select the ones that will make up the calendar each year have put together this brief essay to offer suggestions that will hopefully increase the variety and quality of the photographs submitted.

Initial considerations:

(1) The calendar pages are 12" by 12." In order to print an image this size from your digital camera at a resolution necessary to make a quality print (300 pixels per inch), your image needs to measure 3,600 pixels by 3,600 pixels, i.e., 300 pixels per inch times 12 inches = 3,600 pixels. You should check your smart phone for information about the number of megapixels that are in the photos taken with your camera. Most are 12 megapixels in the 4:3 format, i.e., not square as is required for the calendar, but would produce a print 13 1/3 inches by 10 inches. Currently, most smart phone cameras do not provide an image that will print a 12" by 12" image at a required print resolution of 300 ppi (pixels per inch).

(2) Plan your photos to tell a story (of course, have your camera ready while you are on the towpath for an unusual shot that will need to be taken immediately). Planning your photos to tell a story means learning something about the canal. Visit the Delaware and Raritan Canal Commission website (<https://www.nj.gov/dep/drcc/>), the state park website (www.dandrcanal.com), and the D&R Canal Watch website (www.canalwatch.org). From the Commission webpage under **about the canal**, click on the map of the canal and also click on the Historic Map of the canal. The Historic Map of the canal includes Bordentown, where the canal originally began. Plan to visit some parts of the canal, both the main and feeder canals, that you have not seen and include a visit to Bordentown from which location you can walk to the beginning of the canal at Crosswicks Creek. At this location you are able to see the original wooden lock. However, check the tides for the Delaware River at Crosswicks Creek and make sure to go at low tide or you will not be able to see the original lock. You can walk about two miles of towpath from the lock at Bordentown. Excellent resources for learning more about the canal are books written by Linda Barth and Bill McKelvey.¹



(3) Since the canal is a place that you can visit often, plan to visit the canal in different light, especially early morning and at dusk: sunrise at New Brunswick², sunset on the feeder canal at Bull's Island. Also plan visits at different seasons of the year: spring when flowers start to bloom; summer for sunrises and sunsets; fall for the change in leaf color and their reflections in the canal; and, of course winter, especially after a new snow and/or after several days and nights of below freezing weather when the canal freezes over.

(continued on the next page)

4) Be aware of the structures needed to make a functioning canal: locks; bridges—both car and railroad; bridge and lock tender houses; aqueducts; culverts through which existing streams flow under the canal; spillways (if you are interested in geology, the rocks used to make spillways, such as the one you walk across on the towpath from Kingston to Carnegie Lake and the one seen by going to the towpath behind the Rutgers Preparatory School, provide excellent examples of New Jersey’s geological history, turning basins, and floodgates.³

¹Barth, Linda. *The Delaware and Raritan Canal (NJ); The Delaware and Raritan Canal at Work*; and *The Millstone Valley Through Time*. All are available on Amazon. The canal follows the Millstone River from Carnegie Lake until the Millstone River flows into the Raritan River near Lock 10.

McKelvey, William J. *The Delaware and Raritan Canal: A Pictorial History and Champlain to Chesapeake*.

²Getting to the canal in New Brunswick is somewhat tricky. You have to be on Route 18 heading from Route 1 toward New Brunswick and turn off before reaching the central district on the road that takes you to the Rutgers Rowing Team Dock in Boyd Park. Here you will be able to park and walk along the old double locks. Sunrise from here is spectacular!

³An excellent source to locate all these different structures along the feeder and main canals is the publication: *Delaware and Raritan Canal State Park: Historic Structures Survey*. Pages 9-16 list all of the structures by mileage along the canal starting from the entrance to Bull’s Island. However, the information concerning Lock 1 at Bordentown is not included in this publication.

Bearing these ideas in mind, we urge you to start shooting and send your images to Canal Watch president Linda Barth at barthlinda123@aol.com. **PLEASE NOTE THAT THIS YEAR, EACH PHOTOGRAPHER MAY SEND NO MORE THAN 5 IMAGES, SO CHOOSE WISELY.**

Below are a few examples from Ted Settle.



Lock 1 Gate



Lock 10 winter close up



Turn Around Area Just Inside Canal After Lock 1

ONLY 5 2023 CANAL WATCH CALENDARS LEFT

The 2023 D&R Canal Watch Calendar is nearly sold out, so order your copy now.

To purchase a copy, please contact Linda Barth at barthlinda123@aol.com or 908- 240-0488.

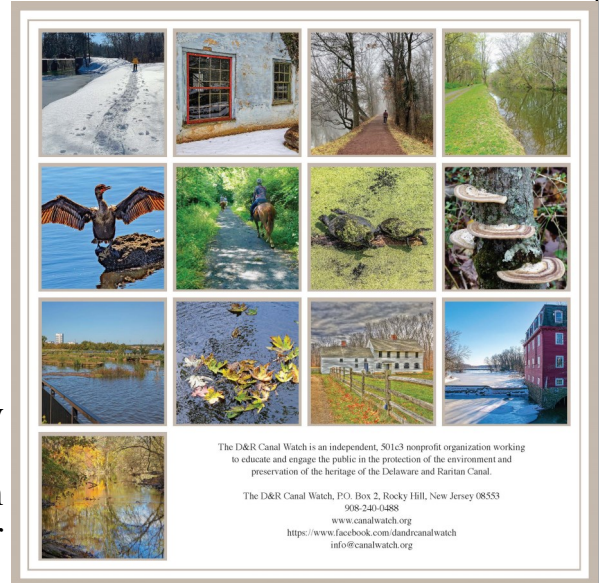
Provide your phone number and your town and she will call you to arrange for delivery.

12" x 12" -- \$20, with all proceeds going to the D&R Canal Watch to restore the Griggstown bridgetender's station. Payable in cash or by check made out to D&R Canal Watch.

This lovely, full-color calendar features images taken by people who visit the towpath.

The photographs include people using the towpath for horseback riding and snowshoeing. Enjoy views of our canal in all seasons.

Our calendar includes a map and a history of the D&R Canal. Photographers featured this year are Tom Egan, Joyce Grygo, Carla Olsen, Summer Pramer, Jorge Rivera, Sandra Shapiro, and Mark Wetherbee.



Anglers asked to be careful with fishing line— Wildlife can be endangered



A park user who is a photographer and a bird enthusiast has asked the Canal Watch to remind our fishermen and women to carefully remove their lines and hooks so that wildlife are not harmed.

She loves the D&R because, in the most densely populated state in the nation, it is a refuge for an astounding number of bird species, including great blue herons, egrets, bald eagles, hawks and songbirds. In winter we can see large numbers of common and hooded mergansers.

We would hate to see any of these birds become entangled in lines and hooks thoughtlessly left behind.

Editor's note: Please pass this information on to anyone you know who enjoys fishing along the canal or in any other natural spot. Surely we can help to save our wonderful birds and mammals.



News from the D&R Canal Commission meeting, October 19, 2022

Executive Director's Report

Director Hutchison noted that, in addition to the 13 projects listed on the agenda, during the prior month the staff issued 13 deficient staff reports, 7 jurisdictional determinations, 3 certificates of approval, and 10 general permits. In addition to the preparation of those documents, staff organized and conducted 11 pre-application meetings related to proposed projects. As of October 17, 2022, 30 projects were undergoing staff review.

The director reported that collections for the preceding month totaled \$51,925, which compared favorably to the \$52,150 collected in September 2021. The fee collections for the fiscal year now totaled \$179,802, which was approximately \$5,000 more than last year.

The director stated that he was pleased to report that one of the general permits issued in October was to the NJWSA for the Phase 1 in-kind rehabilitation of the Delaware and Raritan Feeder Canal western embankment in Stockton. He recounted how the embankment had been overtopped by water from the Delaware River during storms in 2005 and 2006, when the embankment breached into the canal. He also noted that in 2011, Tropical Storms Irene and Lee caused severe flooding of the Delaware River, and while the canal was not breached, more than 1,000 linear feet of the embankment experienced slope failure on the canal side due to the saturation of the embankment from the river. The NJWSA installed plastic tarps as an emergency measure to help prevent a breach of the embankment following the 2011 storms, while plans were developed to effect permanent repairs to improve the appearance and integrity of the canal embankment.

The director noted that the repair of the embankment and the resultant closure of the Delaware and Raritan Canal State Park multiuse trail between the canal and the Delaware River had been a matter of great concern to the Commission, and that the advancement of the project was a welcome development. He thanked NJWSA chief engineer Darin Shaffer for consulting with the Commission and its staff so that the issuance of the permit was accomplished in a timely manner.

The director noted that on October 12, 2022, he and Darlene Yuhas attended the Millstone Valley National Scenic Byway Stakeholder Meeting at the Montgomery Township Municipal Center. The focus of the meeting was the Delaware and Raritan Canal State Park and its needs. Mr. Hutchison stated that he was grateful for the invitation and pleased that he was able to answer some of the participants' questions about the Commission and its regulatory and planning programs.

Mr. Hutchison was pleased to report that on September 28, 2022, the New Jersey Historic Trust Board of Trustees unanimously approved a recommendation for a \$550,000 Special Projects grant to the Commission to fund an update of the Commission Master Plan, which was last revised in 1989. He observed that the recommended funding would enable the Commission to work with key stakeholders to shape the future of the Delaware and Raritan Canal State Park, with a particular emphasis on surveying, protecting, and preserving the many historic resources located within the canal's Review Zone. He stated that the update of the Master Plan was a goal that he promised to pursue at the time of his appointment, and that he was gratified that the Trust's action will advance this essential project in a meaningful way for the first time in three decades.

The director specifically thanked Dorothy Guzzo, the Trust's executive director, for recognizing the importance of the Master Plan update and for her perception that the project would meet the necessary criteria for the Trust's newly created and never-before-awarded grant category of Special Projects. He also congratulated Communications Director Darlene Yuhas for her work on the grant proposal, and for her work coordinating the meetings between the Commission staff and the Trust.

Mr. Hutchison stated that the approved grant award recommendation would be presented to the Garden State Preservation Trust for approval in the coming weeks. After that, the Commission's special project, along with the grants approved for other projects statewide, would be drafted into appropriation legislation. He promised to keep the Commission apprised of the progress of the legislation.

Vice-Chairman Stout remarked that it was very exciting news about the Master Plan and that the Commission looked forward to a new process that was transparent and involved all stakeholders.

Park Superintendent's Report

Superintendent Kalleser reported that the vandalism-damaged lower floor windows at the Griggstown Muletender's Barracks in Franklin Township were secured by Hawley Brothers on October 18. She stated that the second floor of the building would be secured in 2023.

The superintendent reported that ash trees infected by emerald ash borer were removed from the Rockingham State Historic Site and the Delaware and Raritan Canal State Park access lot in Rocky Hill Borough on Route 518.

She noted that repair work to the pedestrian bridge south of the Griggstown Causeway that provides a connection between the towpath and the causeway parking area is 98% complete and will open by the end of October.

The superintendent attended a construction design meeting on the project to connect the Port Mercer Canal House to the Ewing-Lawrence Sewer Authority system. She was excited about the commencement of the project, which would allow the Park Service to reopen the building and allow the Lawrence Historical Society to resume using the house.

She stated that the Park Service was coordinating with the DEP Division of Sustainable Waste Management to remove between 80 and 90 tires that were dumped into the Greenway beneath the Prospect Street Bridge in the Trenton.

In addition, Public Service Electric and Gas (PSE&G) completed the mitigation project at the Five-Mile Lock in Franklin Township. PSE&G notified the Park Service that work would begin on the removal of four trees beneath the aerial electrical line at Demott Lane in November. The tree removal will utilize a flag man, and no closure to the towpath was anticipated at this time.

New Jersey Water Supply Authority (NJWSA) Report

Michael Sellar reported that the Landing Lane spillway rehabilitation project was tentatively scheduled to commence in the next two weeks according to the contractor. He noted that he did receive a "One Call" excavation notification, which meant that the contractor was within 10 days of putting a "shovel in the ground" for that project.

Mr. Sellar noted that NJWSA had received the Commission General Permit No. 1 for the Phase 1 project to repair the canal western embankment in Stockton Borough, and that the authority was waiting for approvals from the DEP State Historic Preservation Office before starting that project.

He also reported that the Delaware River side canal embankment repair project from Bulls Island Recreation Area south to Prallsville Mills had been submitted to other state agencies for approvals, and that the NJWSA was working on the final design and final tree surveys for the project.

Mr. Sellar stated that NJWSA will undertake a project to replace the sluice gates at the canal locks at Griggstown, 10-Mile Lock near Weston Canal Road, Lock No. 11 at South Bound Brook, and Five-Mile Lock, and that he anticipated that permit applications would be filed soon with the Commission and other impacted state agencies.

You may take part in the monthly commission meetings either in person or online. Visit www.nj.gov/dep/drc and click on "Meeting Information." Then click on "Upcoming Meeting Notice." The D&RCC meets at 10:00 a.m. on the third Wednesday of each month. The public is allowed to comment on the proceedings. In-person meetings have resumed; they are held at Prallsville Mills on Route 29, just north of Stockton.

LETTERS, WE GET LETTERS...

You always manage to turn out a readable, colorful and all round delightful Canal Watch newsletter. We went over to our bench today to enjoy this glorious weather and were delighted at the job that the Wednesday Work Crew did to clean up the entire area around the bench. On the Muletenders Barracks the new job to close up the windows looked very good.
Ellen and Michael Kaplan

Great newsletter! Great issue! You really do a GREAT job!
Susan Goldey



Class of 2020-2023

Theodore Chase (Griggstown)
Tim Roth (Long Valley)
Jeff McVey (Lambertville)
Barbara Ross (Princeton)

Class of 2022-2025

Linda Barth (Somerville)
Robert Barth (Somerville)

Christopher “Kip” Bateman (Branchburg)
Barbara ten Broeke (East Millstone)

Class of 2021-2024

Tom Lederer (Princeton)
Carl Hemmingsen, (Bordentown)
Marion Munk (Piscataway)
Wayne Petko (South Bound Brook)
Charles Martin (Franklin Township)

EVENTS YOU MAY WISH TO ATTEND

Now through January 8 – Mercer County

Morven’s “Festival of Trees” is now on view!

Wednesdays through Sundays, 10 a.m. to 4 p.m., until Jan 8, 2023.

Morven’s annual winter exhibition, Festival of Trees, a must-see holiday tradition, is back! Come enjoy the museum’s elegant galleries, mantels, and porches artfully decorated for the holidays by local businesses, garden clubs, and non-profit organizations.

Festival of Trees will be on view Wednesdays through Sundays, from now until Jan 8, 2023 from 10:00 a.m. to 4:00 p.m.

Additionally, we will be open Monday, December 5th and Monday, December 12th to coincide with Drumthwacket Open House Days. The museum will be closed on the following dates: Christmas Eve, Christmas Day, New Year's Day.

Upcoming Festival of Trees-related programs!

After Hours Tour with Morven's Deputy Director & Curator

Thursday, December 15 at 6:30 p.m.
\$20 General Admission—\$10 for Morven Members
Celebrate the holiday season with a special “after hours” tour of Morven’s first floor with Deputy Director and Curator Elizabeth Allan. Amidst the beautiful Festival of Trees, Beth will share little-known stories not included in Morven’s typical tour while illuminating a few ongoing mysteries uncovered during research. Attendees will enjoy holiday-themed snacks, wine, and a signature cocktail in the museum’s Garden Room before the tour. Space is limited to 20 participants, so act fast to reserve your spot!

For program-related inquiries, email Greer Luce, Curator of Education & Public Programs, at gluce@morven.org 609.924.8144 x106
For more information, contact Diana Griffin, Private Events Manager, at dgriffin@morven.org or 609.924.8144 x105

Sunday, December 11 — Mercer County

A Free Event: “Washington’s Landing in New Jersey” at Washington Crossing State Park on December 11

Can you imagine rowing through ice floes and then trudging through a blizzard in the middle of the night, with miles to go before your destination is reached — especially when that destination is a battle to decide the fate of your country? The paintings that show General

Washington crossing the Delaware on that snowy Christmas night in 1776 have forever caught the imagination of the public—so much so that annual December reenactments by Washington Crossing Historic Park in Pennsylvania attract thousands of visitors each year. But what happened once the troops landed in New Jersey? This year you can get a glimpse of that experience at the Washington Crossing State Park in Titusville.

On December 11, from 10am to 3pm, please join State Park historians, the Washington Crossing Park Association, the First Rhode Island Regiment (a group of African-American reenactors who tell the stories of the historically underrepresented men and women who fought in the Revolutionary War), and other NJ-based reenactor groups who will give the public an opportunity to experience both the Crossing and the March to Trenton through the eyes of the men and women who lived it.

The title of this event is “Washington’s Landing in New Jersey,” which occurs on the same day as the Pennsylvania park’s rehearsal of the crossing of the Delaware. The encampment will take place at the New Jersey park’s overlook, next to the historic Johnson Ferry House, with a wonderful view of the river below. Reenactors will patrol the lower park, encouraging visitors to undertake a brief “march” over the park’s pedestrian bridge and up to the overlook, where cozy fires, hot cider, and skilled reenactors will regale them with tales of the rich history that took place in Mercer County. Special efforts will be made to engage the youngest visitors in the hope of sparking their interest in New Jersey history.

The event will feature programming throughout the day, including a presentation by noted historian Larry Kidder, entitled “*The Crossing Was Just the Beginning: The little-known story of local New Jersey militiamen who guided Washington's army to Trenton.*” Our partners are the Washington Crossing State Park (a division of the NJ DEP); the Washington Crossing Park Association, and the First Rhode Island Regiment.

OVER

At Princeton Battlefield
State Park, NJ
January 8, 2023
Starts at 9:30 AM

★★★★ EXPERIENCE THE ★★★★★ BATTLE OF PRINCETON

Register at
www.pbs1777.org

Or contact Princeton
Battlefield Society at

info@pbs1777.org



FREE
Coffee &
Hot
Chocolate

Photographs by Al Pochek



- ★ Witness British and American reenactors, musket and cannon firing, in a reenactment of the January 3, 1777 Battle of Princeton.
- ★ Converse with living historians bringing Experience the Battle of Princeton to life.
- ★ Join us at a wreath-laying ceremony at the Colonnade and Memorial Grove.
- ★ Meet and greet military units with lineage back to the Battle of Princeton.
- ★ Tour the historic Thomas Clarke House where General Hugh Mercer died of wounds he suffered during the battle.
- ★ Take pictures as personal memories of this historic event.
- ★ And, if you are the first 200 registered before January 7, stop by our welcome table and receive Experience the Battle of Princeton gifts.



WASHINGTON'S LANDING
in New Jersey

DECEMBER 11 | 10 am - 3 pm

Washington Crossing State Park of NJ



This program is made possible in part by the Mercer County Division of Culture & Heritage through funding from the New Jersey Historical Commission

For more
information visit
wcpa-nj.com



The D&R Canal Watch is asking for your support for our activities that protect, maintain, and promote the recreational, historical, aesthetic, and environmental qualities of the Delaware & Raritan Canal State Park. Over the past years, the Canal Watch has:

- **Restored the Kingston canoe/kayak boat launch**
- **Paying for the conditions assessment and the engineering drawings for the East Millstone and Griggstown bridgetender stations.**
- Led history walks along both the main canal and the feeder, pointing out historic structures and Light Rail study tours
- Led history bike rides along the main canal and star-gazing events
- Sponsored bird watching walks along the main canal and bilingual nature walks
- Installed and facilitated canal interpretive signage at locks and spillways
- Activities in 2009 marking the 175th anniversary of the opening of the Delaware and Raritan Canal. These included “Meet the Canal Authors Day” and “The D&R Canal: Yesterday, Today, Tomorrow,” by Richard Hunter” walks, bike rides, canoe and kayak rides, “Hands Along the Canal,” and proclamations from our legislature.
- Examination of Lock 9 to determine the feasibility of reopening the lock to navigation
- Post-flood cleaning of canal structures in Griggstown, Zarephath, and East Millstone
- Painting over graffiti in East Millstone
- Repair of shutters on the East Millstone bridgetender’s home
- Straightening and painting of the outhouse at the East Millstone bridgetender’s home
- Staffing the East Millstone bridgetender’s home during the village’s Canalfest in October
- A photographic exhibit of the homes of bridgetenders and locktenders.
- Services of an information technology consultant for the park’s computers
- Funded classes to certify maintenance staff in small motor repair, applying herbicides, etc.
- Contacted legislators and the governor’s office to keep the parks open and retain the commission
- Facilitated the mothballing of an empty bridgetender’s home by buying lumber and painting the windows.
- Installed Kaya-Arms on docks to facilitate entering and exiting kayaks
- Funding the park’s website and continued updating
- Paying the dues for the Meetup site used for announcing park activities
- Sponsored lectures on topics such as “The Role of the Delaware and Raritan Canal in the Growth of Trenton’s Industrial Potteries,” “The Operation of the Joint Companies and the Interrelationship of the canal with the state’s first railroad,” “The Roebling Story,” “Photography Along the Delaware and Raritan Canal State Park: Treasure in Central New Jersey,” “Meet Ashbel Welch, the second chief engineer of the Delaware and Raritan Canal,” and Jim Amon on how the canal and the park changed during his tenure with the commission.
- Purchased gifts that the park budget could not provide. These include a digital camera, seven picnic tables, several benches, a laptop computer and software, a desktop computer, an LED projector, an inflatable screen for outdoor viewing of videos, a subscription to the Meetup website, a scanner, printer ink, a water testing kit, an external computer drive, lumber for canoe dock at Griggstown, folding tables and twenty chairs for Bulls Island, development of a new park website and maintenance of the site at the rate of \$50 per month, and professional courses for the maintenance staff.

Canal Watch Calendar of Events

To see our events for 2023, please check this issue or the Canal Watch website, www.canalwatch.org

We have been sending the Canal Watch newsletter by email so that you can read it in **COLOR**. You also have one less item to recycle. If you would like a black-and-white paper copy, please write to Linda Barth at barthlinda123@aol.com and she will mail a printed copy to you.



The mill at Kingston
Photo by Summer Praner

Board of Trustees

Linda Barth, president
Charles Martin, vice president
Wayne Petko, secretary
Tom Lederer, treasurer
Robert Barth
Christopher "Kip" Bateman
Ted Chase
Carl Hemmingsen
Jeff McVey
Marion Munk
Barbara Ross
Tim Roth
Barbara ten Broeke

The D&R Canal Watch
P.O. Box 2
Rocky Hill, New Jersey 08553
908-240-0488

www.canalwatch.org
<https://www.facebook.com/dandrcanalwatch/>
info@canalwatch.org

Our Mission

The D&R Canal Watch is an independent, nonprofit organization working to engage the public in the protection of the environment and preservation of the heritage of the D&R Canal.

D&R Canal Watch Memorials are a thoughtful gesture

Often when friends or family members have passed away, people ask where they can make a donation that would be meaningful to the deceased.

If your loved one enjoyed exploring the canal or just found it a peaceful sanctuary, perhaps a gift to the D&R Canal Watch would be appropriate.

All of our funding is used to enhance the park and assist the staff in purchasing necessary equipment. If you would like to discuss this option, contact us at info@canalwatch.org.



Renew early: 2023 Membership

As we approach the new year, we would like to remind our members to please renew their membership. You can do so online by visiting www.canalwatch.org and clicking on "Join" at the top right.

Please wait a few seconds for the membership form to appear. When you click "Submit," you will be taken to the payment page. If you prefer to pay by check, please make it payable to D&R Canal Watch and mail it to the Canal Watch at P.O. Box 2, Rocky Hill, New Jersey 08553.

Alternately, you may use the form below and mail it with your check.



D&R Canal Watch 2023 Membership Renewal Form

Membership year: January 1 to December 31

Nonprofit Org \$10 _____ Individual \$15 _____ Family \$25 _____ Organization \$40 _____
Supporter \$100 _____ Patron \$250 _____ Business member \$500 _____ Benefactor \$1000 _____

Name _____

Address _____

City _____ State _____ Zip _____

Phone(s) _____

Email address _____

Please send this form and your check, payable to the D&R Canal Watch, to D&R Canal Watch, P.O. Box 2, Rocky Hill, New Jersey 08553-0002. Dues can also be paid online at <https://canalwatch.org/join/>

For reasons of fiscal and environmental responsibility, newsletters will be posted on the Canal Watch website, www.canalwatch.org, and emailed to members for whom we have email addresses. If you require a paper copy, please check here _____.

Volunteers are needed to lead walks/trips. Do you have computer, photography, or design skills that you are willing to use for the organization? Would you like to join the Wednesday Work Crew? May we call on you? Yes ___ No ___ Try me ___ (circle your skill)